



<b>MODELS</b> Y21472B Mini	diam. 88 mm; length 202 mm
Y21473B Small	diam. 88 mm; length 258,5 mm
Y21474B Medium	diam. 88 mm; length 373 mm
Y21475B Large	diam. 88 mm; length 518,5 mm

### Profine® Vending BROWN

Profine® Vending BROWN Water filter cartridge gives you:

- prevention of precipitation of carbonates
- maintaining of pH as favourable as possible
- an extended capacity guarantee
- a final stage of bacteriostatic microfiltration
- an adjustable by-pass from 15% to 70%
- chlorine removal
- a food grade certificated resin for water treatment

All these features make PROFINE® Vending BROWN ideal for use in drink machines, coffee machines, combi-steamers.

**IDEAL FOR COFFEE.** Thanks to a multi-stage design in the exclusive formulation of the bed of specific ion exchangers, which guarantees the more extended functional autonomies; the cartridge PROFINE® Vending BROWN refines the water quality allowing you to have the best coffee flavour and an ideal coffee foam in colour and texture.

**PROTECTION OF PLANTS.** In addition PROFINE® Vending BROWN also gives protection to your machine technology maintaining pH as favourable as possible. It is equipped with an exclusive by-pass integrated in the cartridge head that allows you to adjust it directly at each replacement. It also eliminates bad tastes and odours.

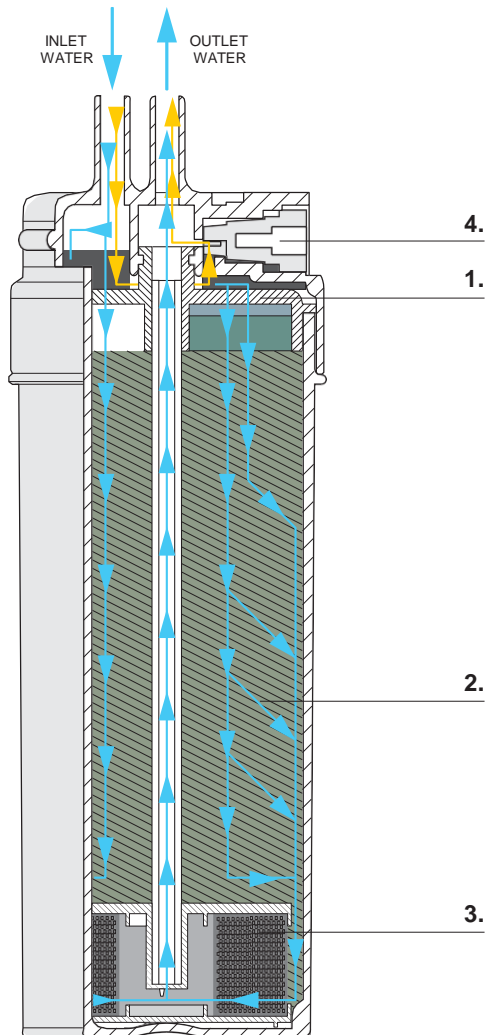
**STEM DESIGN.** Thanks to the compact stem design, it is possible to connect the water circuit directly to the filter cartridge. Without the cartridge head the installation volume is reduced as 30% and any service action becomes easier.

**USE.** PROFINE® Vending BROWN takes part in a group of Profine® Vending products tested and designed to meet every demand in restaurant, catering and vending sectors. It's ideal for use in drink machines, coffee machines, combi-steamers. The cartridge must be used only with cold drinking water.

### TECHNICAL SPECIFICATIONS

<b>Working pressure</b>	Min. 2 - Max 6 bar (0.2 - 0.6 Mpa)
<b>Temperature</b>	Min. 4 - Max 30° C (39 - 86 °F)

Water to be treated		Capacity according to ion-exchange resin capacity with by-pass in 3 <sup>rd</sup> position (•••)			
Hardness °f	Hardness °KdH	Mini (l)	Small (l)	Medium (l)	Large (l)
18	10	637	991	1.557	2.265



#### TOP TECHNOLOGY IN 4 STAGES:

1. laminated upper distributor to optimize the inlet flow
2. bed of ion high efficiency exchange resins to ensure maximum exchange capacity in reduced space
3. bacteriostatic post-filtering step to eliminate odours and flavours and chlorine compounds and ensure action against bacterial growth
4. by-pass integrated: the cartridge is equipped with a continuous setting by- pass

#### INSTALLATION:

- The cartridge must be installed in vertical position.
- Installation must be done in compliance with local regulations in law.
- Use only IN OUT FEMALE CONNECTION 3/8".

**REPLACEMENT:** change cartridge after 12 months or when capacity is reached.

**vcv**

**PACKAGING:** cardboard box 6 pieces

**Mini** L x W x H: 28.5 x 19 x 22.9 cm

**Small** L x W x H: 28 x 20 x 28 cm

**Medium** L x W x H: 28 x 20 x 39,5 cm **Large**

L x W x H: 28 x 20 x 54 cm

---